

# **Implants for internal fixation**

Hồ Quang Hưng

26/6/2008

# Materials

- Metals:
  - Stainless steel
  - Pure titanium
  - Titanium-vanadium
- Others:
  - Polymeric materials
  - Biodegradable Polymeric Materials
  - Ceramic Materials

# Intramedullary implants

- Kuntscher nail
- Locked intramedullary nail
- Steinmann pin
- Rush pin
- Kirschner wire

# Kuntscher nail



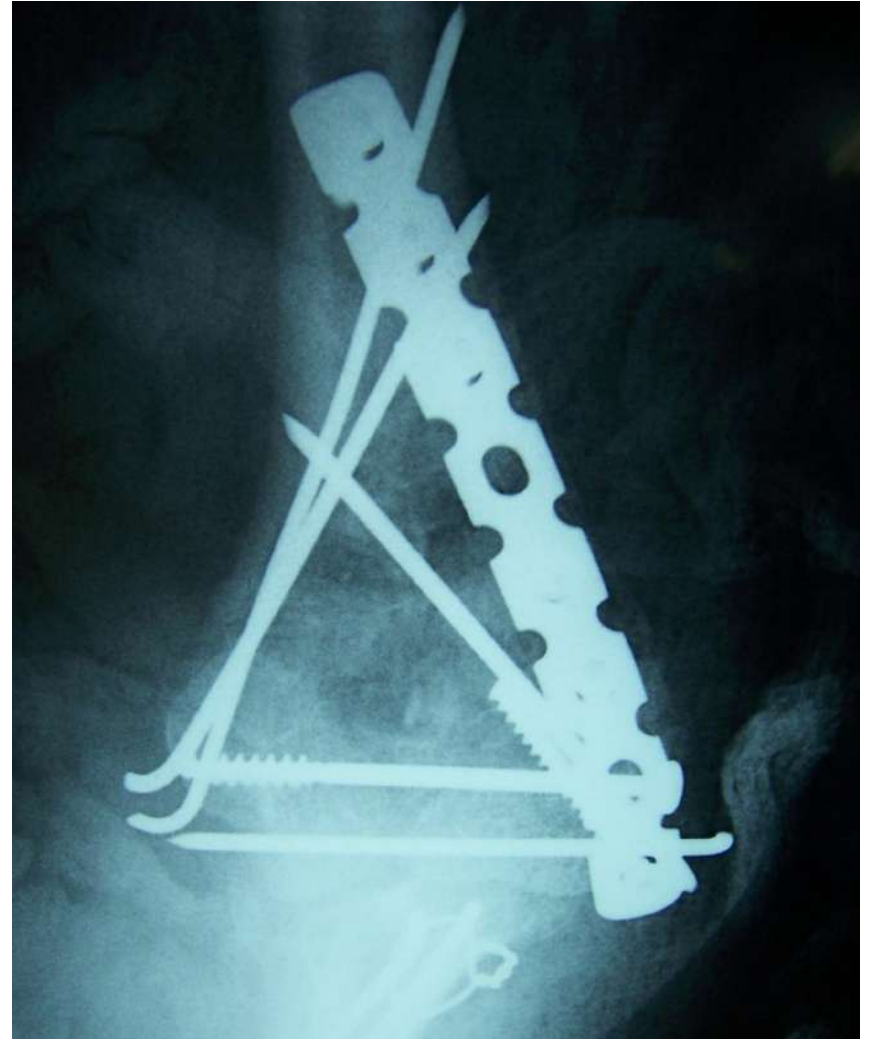
# Locked intramedullar nail



# Rush pin



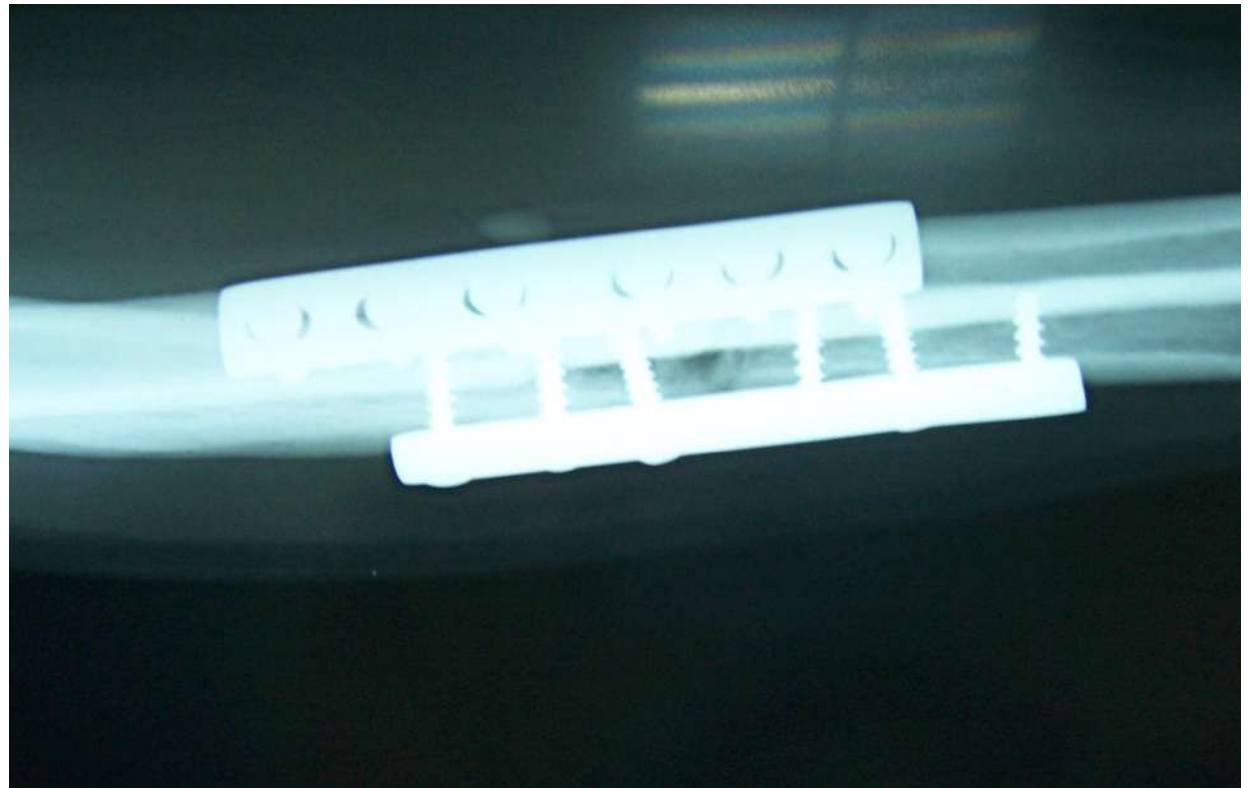
# Kirschner wire



# Plate

- Butress plates
- Compression plates:
  - DCP: Dynamic Compression Plate
  - LC-DCP: Limited Contact DCP

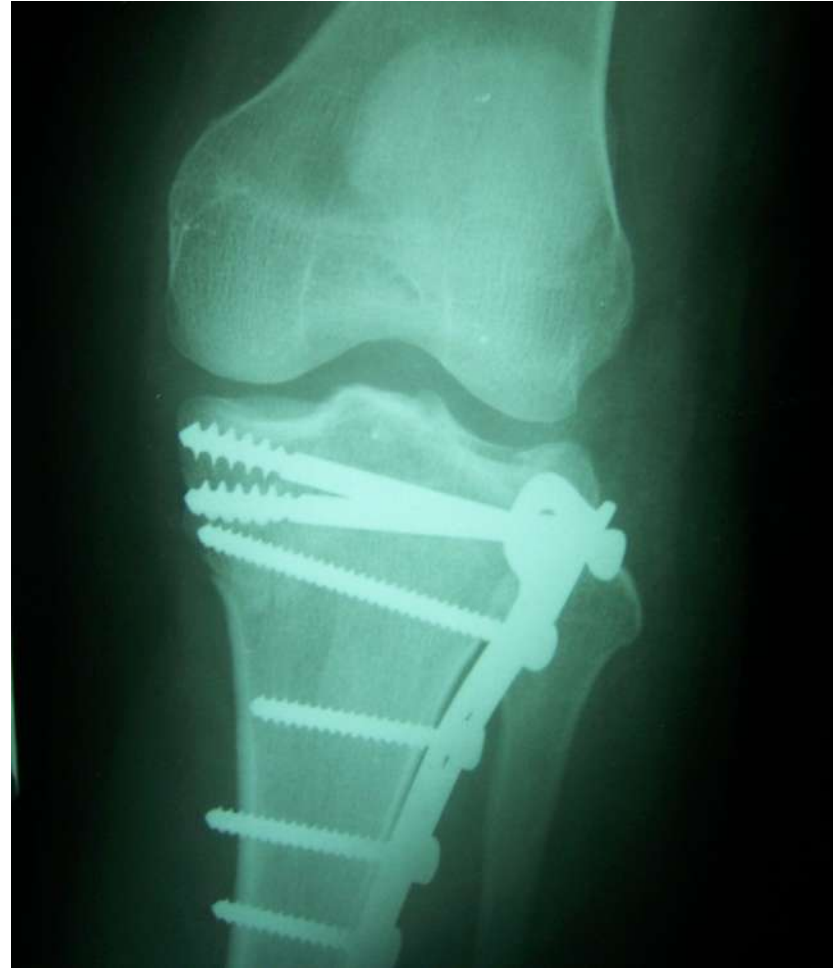
# Dynamic Compression Plate



# Butress plates



# Butress plates



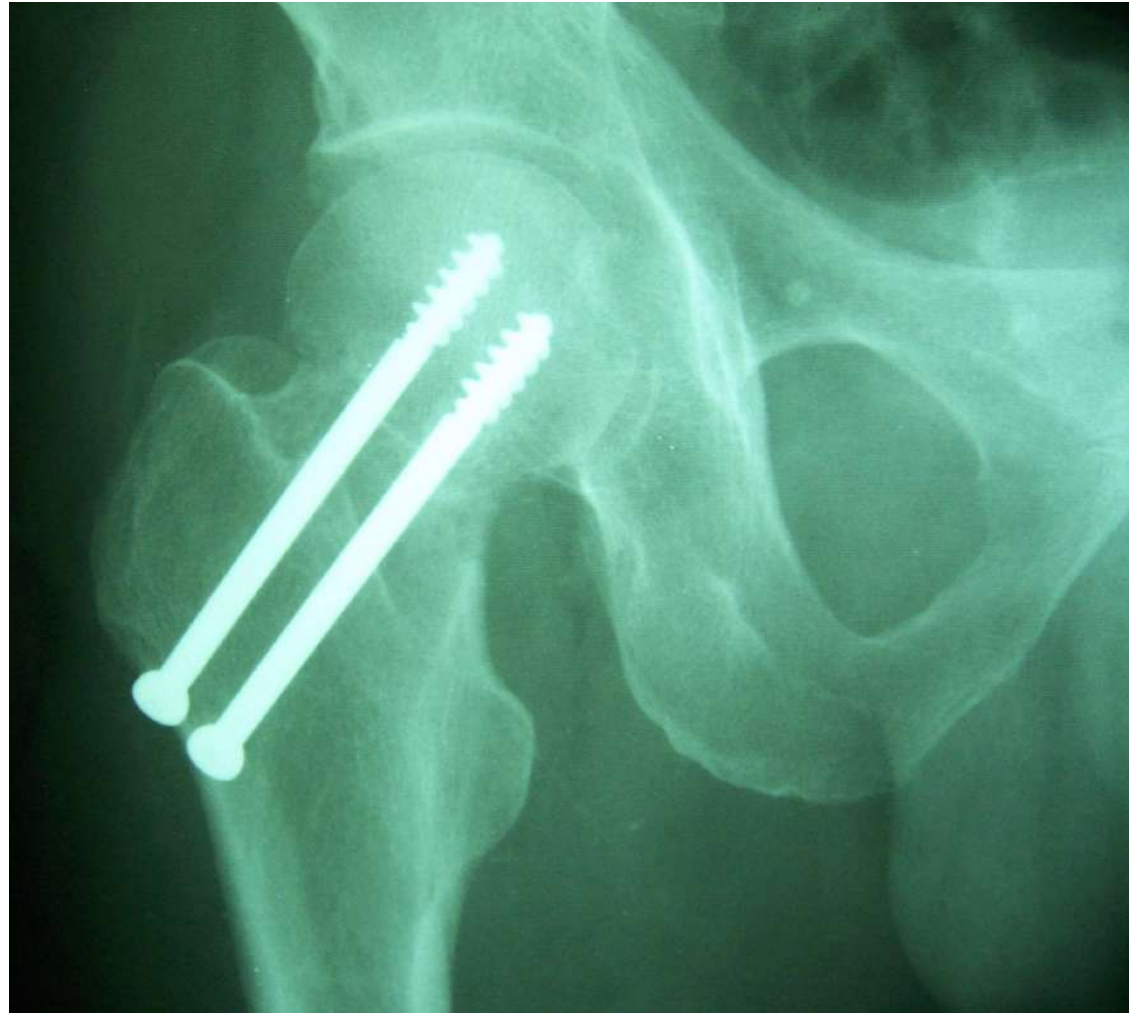
# Angled plates: 130° plate, 95° plate



# Dynamic Hip Screw



# Cancellous bone screw



# Cancellous bone screw



# Cortex bone screw and cancellous bone screw



# Steel wire



# Steel wire

